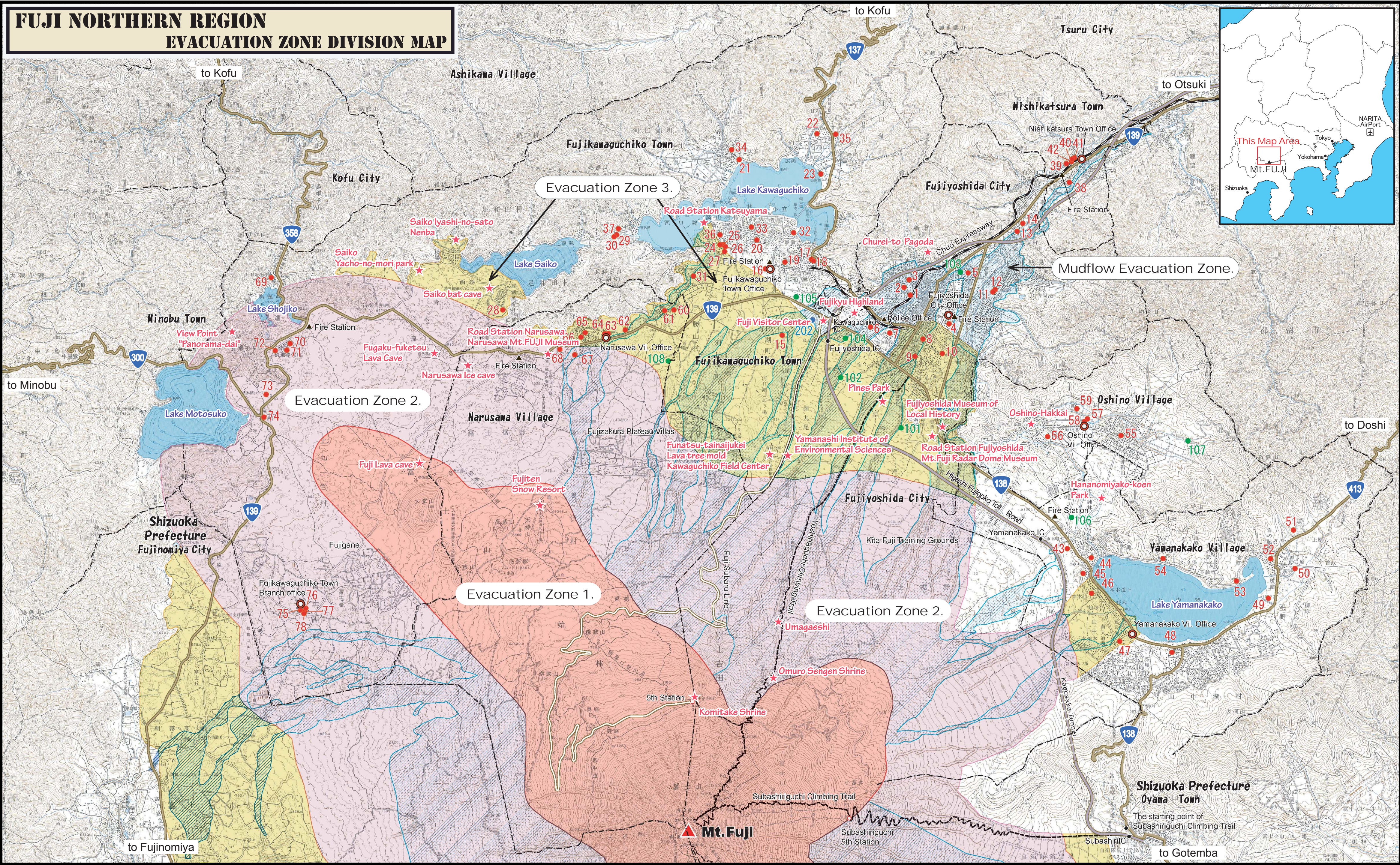


FUJI NORTHERN REGION  
EVACUATION ZONE DIVISION MAP



How to read this map.

- Evacuation Zone 1.**  
(Year Round) Highest probable location of an eruption crater.  
*Crater formation is not limited to this area.*
- Evacuation Zone 2.**  
(Year Round) This area requires **immediate** evacuation when an eruption is eminent.  
*If an eruption occurs, any of the conditions listed below may cause immediate danger.*
1. Falling rocks released from the exploding crater (areas outside Zone 2 may also experience falling stones up to 10cm in diameter).
  2. If pyroclastic flows develop, hot gasses that travel at high velocity.
  3. Lava flows that reach the area within 3 hours.

- Mudflow Evacuation Zone.**  
(During Snow Season) If an eruption occurs during the winter months when snow has accumulated on Mt. Fuji, this area must be evacuated immediately.  
*Mudflows may overtake these areas immediately after an eruption.*
- Evacuation Zone 3.**  
(Year Round) Though not in immediate danger, evacuation may become necessary for Zone 3 depending on the location of the eruption. Please follow the information provided by public announcements in case of an eruption. In any case, disabled or elderly persons who need assistance to evacuate must do so in advance.  
*Lava flows will approach this area after one day of continued eruptions.*

- Public Evacuation Facilities**
- 1 ~ 82 Emergency Facilities
  - 101 ~ 108 Public Welfare Facilities
  - 201 ~ 202 Main Hospitals.
- The complete list of evacuation facilities may be viewed on the main page under "table of Public Evacuation Facilities".